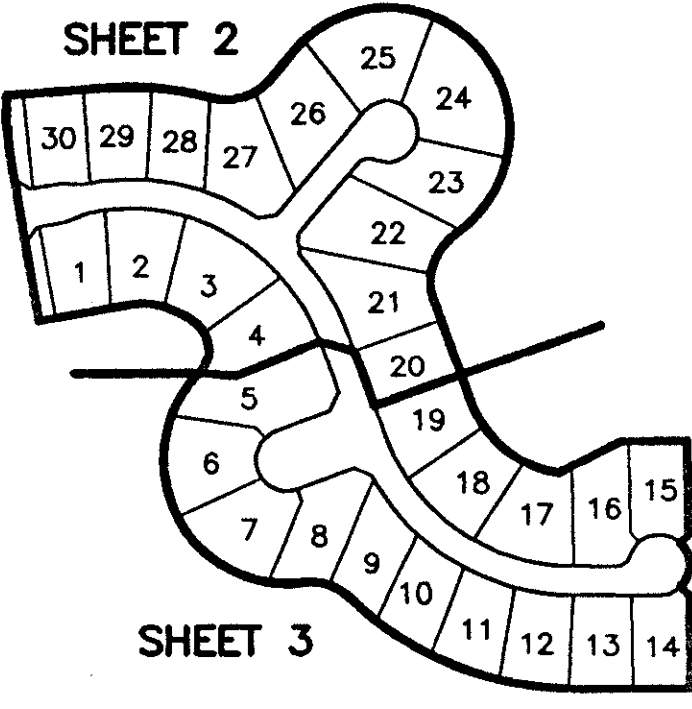


# ADDISON RESERVE PARCEL EIGHTEEN

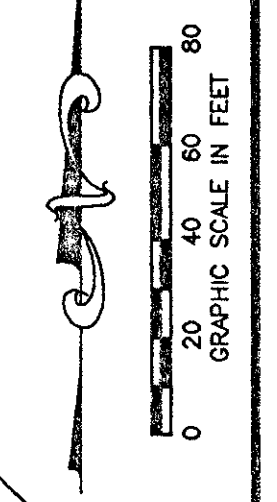
PART OF GLENEAGLES/POLO CLUB WEST P.U.D.  
BEING A REPLAT OF TRACT 18  
"ADDISON RESERVE PLAT FOUR"  
(P.B. 79, PGS. 76-81)

SITUATE IN SECTION 28, TOWNSHIP 46 SOUTH, RANGE 42 EAST  
PALM BEACH COUNTY, FLORIDA  
MARCH, 1998  
SHEET 2 OF 3



SHEET LOCATION MAP  
NOT TO SCALE

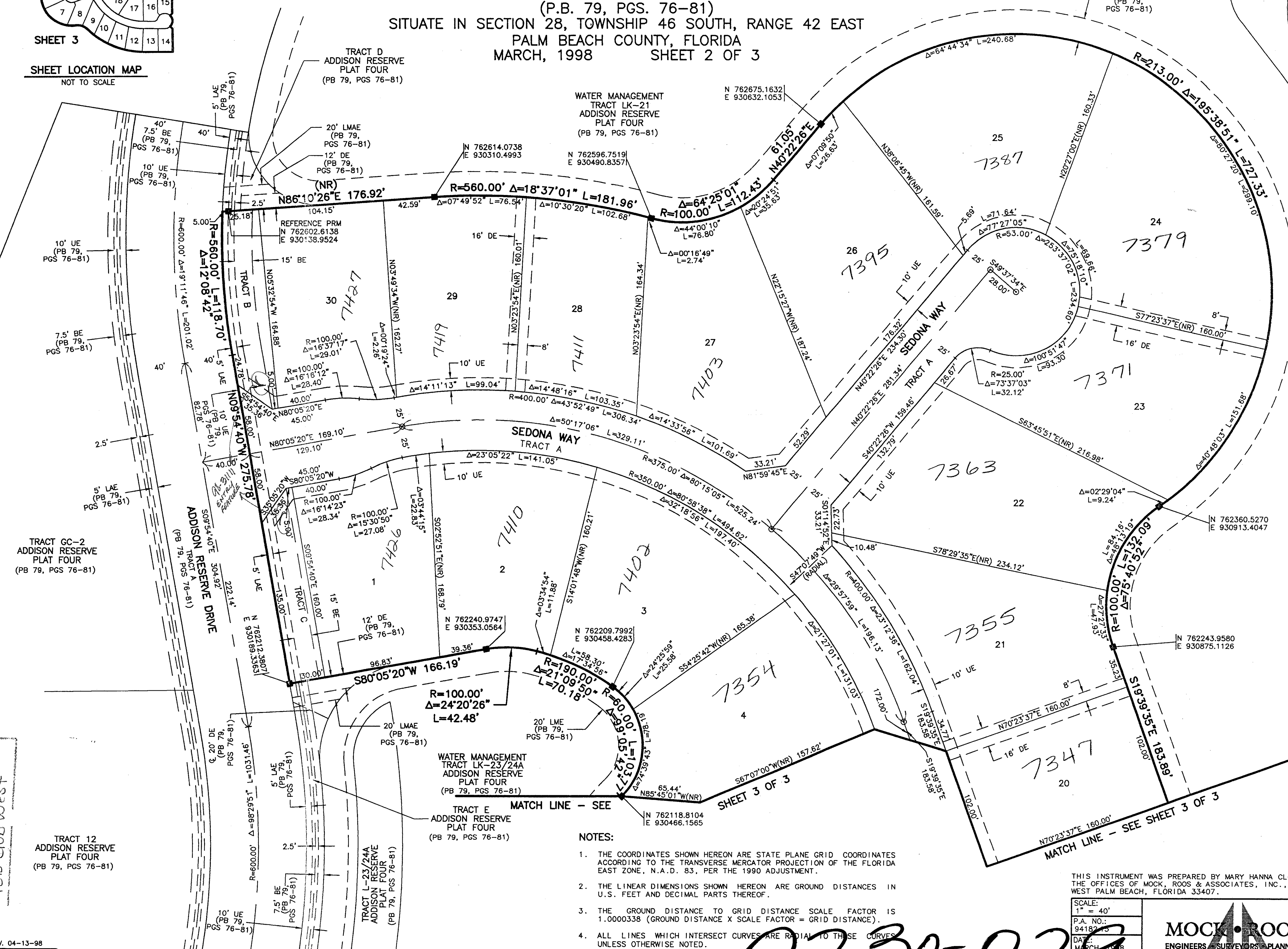
TRACT L-21B  
ADDISON RESERVE  
PLAT FOUR  
(PB 79, PGS 76-81)



STATE OF FLORIDA  
COUNTY OF PALM BEACH  
THIS PLAT WAS FILED FOR  
RECORD \_\_\_\_\_ DAY OF \_\_\_\_\_  
AD, 1998 AND DULY RECORDED  
IN PLAT BOOK \_\_\_\_\_ ON PAGES  
\_\_\_\_\_ AND \_\_\_\_\_  
DOROTHY H. WILKEN, CLERK  
BY: \_\_\_\_\_, D.C.

CIRCUIT COURT SEAL

*PET. 80-215J  
ALOC. #0001  
5/3/13/K*



WATER MANAGEMENT  
TRACT LK-21  
ADDISON RESERVE  
PLAT FOUR  
(PB 79, PGS 76-81)

**LEGEND**

BE	BUFFER EASEMENT
Δ	CENTRAL (DELTA) ANGLE
DE	DRAINAGE EASEMENT
FPL	FLORIDA POWER & LIGHT
L	ARC LENGTH
LAE	LIMITED ACCESS EASEMENT
LE	LANDSCAPE EASEMENT
LME	LAKE MAINTENANCE EASEMENT
LMAE	LAKE MAINTENANCE ACCESS EASEMENT
LWDD	LAKE WORTH DRAINAGE DISTRICT
(NR)	NON-RADIAL
ORB	OFFICIAL RECORD BOOK
PB	PLAT BOOK
PB(S)	PAGE(S)
PUD	PLANNED UNIT DEVELOPMENT
R	RADIUS
UE	UTILITY EASEMENT
■	PERMANENT REFERENCE MONUMENT
●	FOUND PLS# 4763
○	PERMANENT REFERENCE MONUMENT
○	SET PLS# 4763
○	SET PLS# 4763
○	CENTERLINE

**NOTES:**

1. THE COORDINATES SHOWN HEREON ARE STATE PLANE GRID COORDINATES ACCORDING TO THE TRANSVERSE MERCATOR PROJECTION OF THE FLORIDA EAST ZONE, N.A.D. 83, PER THE 1990 ADJUSTMENT.
2. THE LINEAR DIMENSIONS SHOWN HEREON ARE GROUND DISTANCES IN U.S. FEET AND DECIMAL PARTS THEREOF.
3. THE GROUND DISTANCE TO GRID DISTANCE SCALE FACTOR IS 1.0000338 (GROUND DISTANCE X SCALE FACTOR = GRID DISTANCE).
4. ALL LINES WHICH INTERSECT CURVES ARE RADIAL TO THOSE CURVES UNLESS OTHERWISE NOTED.

THIS INSTRUMENT WAS PREPARED BY MARY HANNA CLODFELTER, P.S.M. IN THE OFFICES OF MOCK, ROOS & ASSOCIATES, INC., 5720 CORPORATE WAY, WEST PALM BEACH, FLORIDA 33407.

SCALE:  
1" = 40'  
P.A. NO.:  
94187  
DATE:  
MARCH 1998  
DRAWING NO.  
46-42-28-154

**MOCK ROOS**  
ENGINEERS SURVEYORS PLANNERS  
5720 Corporate Way, West Palm Beach, Florida 33407  
(561) 683-3113, fax 478-7248

**ADDISON RESERVE  
PARCEL EIGHTEEN**  
PART OF GLENEAGLES/POLO CLUB WEST P.U.D.  
BEING A REPLAT OF TRACT 18  
"ADDISON RESERVE PLAT FOUR"  
(P.B. 79, PGS. 76-81)  
SITUATE IN SECTION 28, TOWNSHIP 46 SOUTH, RANGE 42 EAST  
PALM BEACH COUNTY, FLORIDA

*83/22*

*0230-027*

*TAB 478  
ADDISON Reserve  
Parcel 18  
PAGE 22  
FLOOD MAP #21517  
#5205  
ADDP38.dwg  
6-10-98 2:07:56 pm EST 38259*

REV. 04-13-98  
ROAD FILE